



Model: \_\_\_\_\_ Item #: \_\_\_\_\_ Date: \_\_\_\_\_  
 Project: \_\_\_\_\_ Qty: \_\_\_\_\_ Approved By: \_\_\_\_\_

# Ice Bins

# Standard Series Underbar



18-24-7 Shown  
 Available in 1800 or 2100 Series

## Standard Features

<b>Interior</b>	20 gauge stainless steel
<b>Front Apron</b>	22 gauge stainless steel clad over 20 gauge stainless steel
<b>Backsplash</b>	22 gauge stainless steel
<b>Back &amp; Bottom</b>	20 gauge stainless steel
<b>Legs</b>	1-5/8" tubular 16 gauge galvanized steel w/ grey plastic bullet foot
<b>Plumbing</b>	1" IPS drain connection

## Ice Bin with Cold Plate

<b>Cold Plate</b>	Cast aluminum post mix plate with 7 circuits. Plate is sealed into bottom. Each circuit is 5/16" OD stainless steel tubing. Two full with remainder to be half circuits. Bump and swedge fittings on ends.
<b>Plumbing</b>	1/2" IPS drain connection. 4" PVC tailpiece provided. PVC tailpiece required to avoid condensation through metal to metal contact.

Cold Plate units supplied with 1/2" x 4" PVC tailpiece. 1/2" - 20 male threaded



## Optional Accessories

<b>C-19</b>	Stainless Steel Divider (12" Deep)
<b>C19B</b>	Stainless Steel Divider (15" Deep)
<b>C-21</b>	Bottle Wells (6 pack)
<b>C-32</b>	Condiment Tray
<b>C-34</b>	Stainless Steel Perforated Bottom (24", No Cold Plate)
<b>C-35</b>	Stainless Steel Perforated Bottom (30"+, No Cold Plate)
<b>C-36</b>	<b>Upgrade:</b> Stainless Steel Legs
<b>C-39</b>	Right End Side Splash
<b>C-40</b>	Left End Side Splash
<b>SC"XX"H</b>	Partial Sliding Cover ("XX" denotes size of Ice Bin) Example: 36" Ice Bin would need an SC36H
<b>SC"XX"F</b>	Full Sliding Cover ("XX" denotes size of Ice Bin) Example: 36" Ice Bin would need an SC36F
<b>C-43</b>	Bottle Wells (2 pack)
<b>C-46</b>	<b>Upgrade:</b> 10 Circuit Cold Plate (from 7 Circuit Cold Plate)
<b>S-"XX"</b>	Single Speedrail ("XX" denotes 24", 30", or 36")
<b>D-"XX"</b>	Double Speedrail ("XX" denotes 24", 30", or 36")





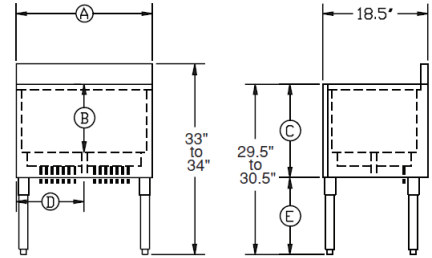
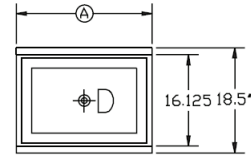
Model: \_\_\_\_\_ Item #: \_\_\_\_\_ Date: \_\_\_\_\_  
 Project: \_\_\_\_\_ Qty: \_\_\_\_\_ Approved By: \_\_\_\_\_

# Ice Bins

# Standard Series Underbar

## 1800 Series

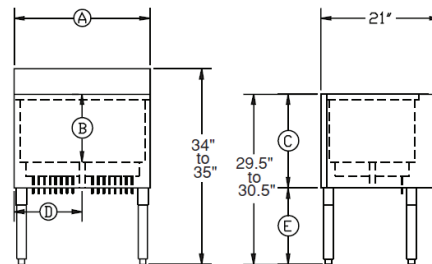
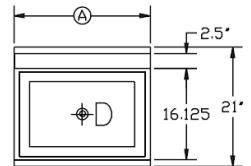
Model Numbers	Length (A)	Ice Bin Depth (B)	Overall Depth (C)	Left Side to Drain (D)	Inside Bin Dimensions	Cold Plate Circuits	Ice Capacity (lbs.)	Leg Size (E)	Weight (lbs.)
18-18	1'-6"	12"	13 1/2"	9"	15" x 16"	N/A	50	16"	40
18-24	2'-0"	12"	13 1/2"	12"	15" x 22"	N/A	80	16"	55
18-30	2'-6"	12"	13 1/2"	15"	15" x 28"	N/A	97	16"	65
18-36	3'-0"	12"	13 1/2"	18"	15" x 34"	N/A	115	16"	69
18-18-7	1'-6"	12"	16 1/2"	9"	15" x 16"	7	50	13"	70
18-24-7	2'-0"	12"	16 1/2"	12"	15" x 22"	7	80	13"	105
18-30-7	2'-6"	12"	16 1/2"	15"	15" x 28"	7	97	13"	113
18-36-7	3'-0"	12"	16 1/2"	18"	15" x 34"	7	115	13"	115
18-24DP	2'-0"	15"	16 1/2"	12"	15" x 22"	N/A	100	13"	62
18-30DP	2'-6"	15"	16 1/2"	15"	15" x 28"	N/A	120	13"	69
18-36DP	3'-0"	15"	16 1/2"	18"	15" x 34"	N/A	138	13"	80
18-24DP-7	2'-0"	15"	19 1/2"	12"	15" x 22"	7	100	10"	132
18-30DP-7	2'-6"	15"	19 1/2"	15"	15" x 28"	7	120	10"	135
18-36DP-7	3'-0"	15"	19 1/2"	18"	15" x 34"	7	138	10"	145



**MECHANICAL REQUIREMENTS:** Cold Plate: 1/2" IPS drain connection No Cold Plate: 1" IPS drain connection

## 2100 Series

Model Numbers	Length (A)	Ice Bin Depth (B)	Overall Depth (C)	Left Side to Drain (D)	Inside Bin Dimensions	Cold Plate Circuits	Ice Capacity (lbs.)	Leg Size (E)	Weight (lbs.)
21-24	2'-0"	12"	13 1/2"	12"	15" x 22"	N/A	80	16"	55
21-30	2'-6"	12"	13 1/2"	15"	15" x 28"	N/A	97	16"	65
21-36	3'-0"	12"	13 1/2"	18"	15" x 34"	N/A	115	16"	80
21-24-7	2'-0"	12"	16 1/2"	12"	15" x 22"	7	80	13"	120
21-30-7	2'-6"	12"	16 1/2"	15"	15" x 28"	7	97	13"	130
21-36-7	3'-0"	12"	16 1/2"	18"	15" x 34"	7	115	13"	135
21-24DP	2'-0"	15"	16 1/2"	12"	15" x 22"	N/A	100	13"	65
21-30DP	2'-6"	15"	16 1/2"	15"	15" x 28"	N/A	120	13"	80
21-36DP	3'-0"	15"	16 1/2"	18"	15" x 34"	N/A	138	13"	95
21-24DP-7	2'-0"	15"	19 1/2"	12"	15" x 22"	7	100	10"	150
21-30DP-7	2'-6"	15"	19 1/2"	15"	15" x 28"	7	120	10"	155
21-36DP-7	3'-0"	15"	19 1/2"	18"	15" x 34"	7	138	10"	160



**MECHANICAL REQUIREMENTS:** Cold Plate: 1/2" IPS drain connection No Cold Plate: 1" IPS drain connection

